



Cleat Selection How To Specify

Cleat Selection

If you're here it's likely you may have asked yourself 'which cable cleat should I use for this job?' Unfortunately the answer frequently is 'well, it depends!'

Cable Arrangement - The cable arrangement/ configuration will primarily dictate the type of cleat required. Cable arrangements for 3 phase installations utilising single conductor cables are typically flat spaced, flat touching or trefoil. A parallel or flat arrangement of single core cables can be completed with a range of single or two-part cleats. Whereas a trefoil or quad arrangement would require a trefoil or quad type cleat respectively.

Cable Type - The type of cable being used, Single or Multi-core, as well as its Voltage Levels and Construction Low Voltage (LV), Medium Voltage (MV) or High Voltage (HV) should be considered.

Cable Diameter - Knowing the overall diameter of the cable (measurement across the entire cross-section) is essential in ensuring the correct size of cleat is selected. It is also required to calculate the short circuit forces that the cleat may be subjected to, this can be used to determine correct cleat spacings.

Performance - A range of factors will dictate the level of performance your installation will require. The size, weight and length of run of the cable also spacing will usually influence whether you require a polymer or metallic cleat. Things such as the support structure material and environmental conditions (corrosion) can also affect your decision of cleat material. Other factors such as project specification may require special provision for performance in the event of a fire. Low Smoke or Zero Halogen options are available along with cast iron in extreme cases.



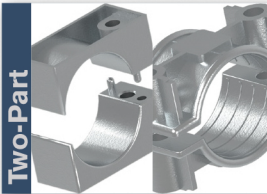
One-Part

Plastic One-Part: The Clingstrap is a comprehensive range of single fixing cable cleats, providing a simple but strong means of securing cables. Suitable for use with cables or pipes ranging from 5-50.8mm in diameter. These cleats are typically used to secure low and medium voltage cables.



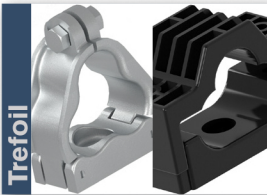
Two-Part

Plastic Two-Part: Available in both single-fixing and dual-fixing, accepting cable diameters from 10-135mm. These cleats offer a wider cable acceptance range and more secure fixing. Increase load rating of the dual-fixing means it can accommodate low, medium and high voltage cables.



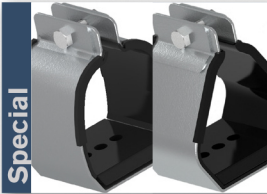
Two-Part

Metallic Two-Part: Available in both single-fixing and dual-fixing, accepting cable diameters from 10-120mm. These cleats offer a wider cable acceptance range and more secure fixing. Increase load rating of the dual-fixing means it can accommodate low, medium and high voltage cables.



Trefoil

Trefoil: Available in both single-fixing and dual-fixing, accepting cable diameters from 24-76mm. These cleats offer a wider cable acceptance range and more secure fixing. Increase load rating of the dual-fixing means it can accommodate low, medium and high voltage cables.



Special

Stainless Steel: Additional styles are available for use in extreme operating conditions. 316 Stainless steel cleats offer superior short circuit withstand levels and corrosion resistance available to suit single, trefoil, quad or bundled cables. Metallic one-part and two-part metallic cleats are also available in cast iron, for the ultimate performance in fire survival situations.