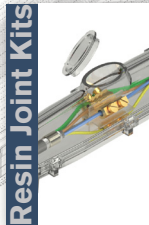


Cable Jointing

Cable Jointing

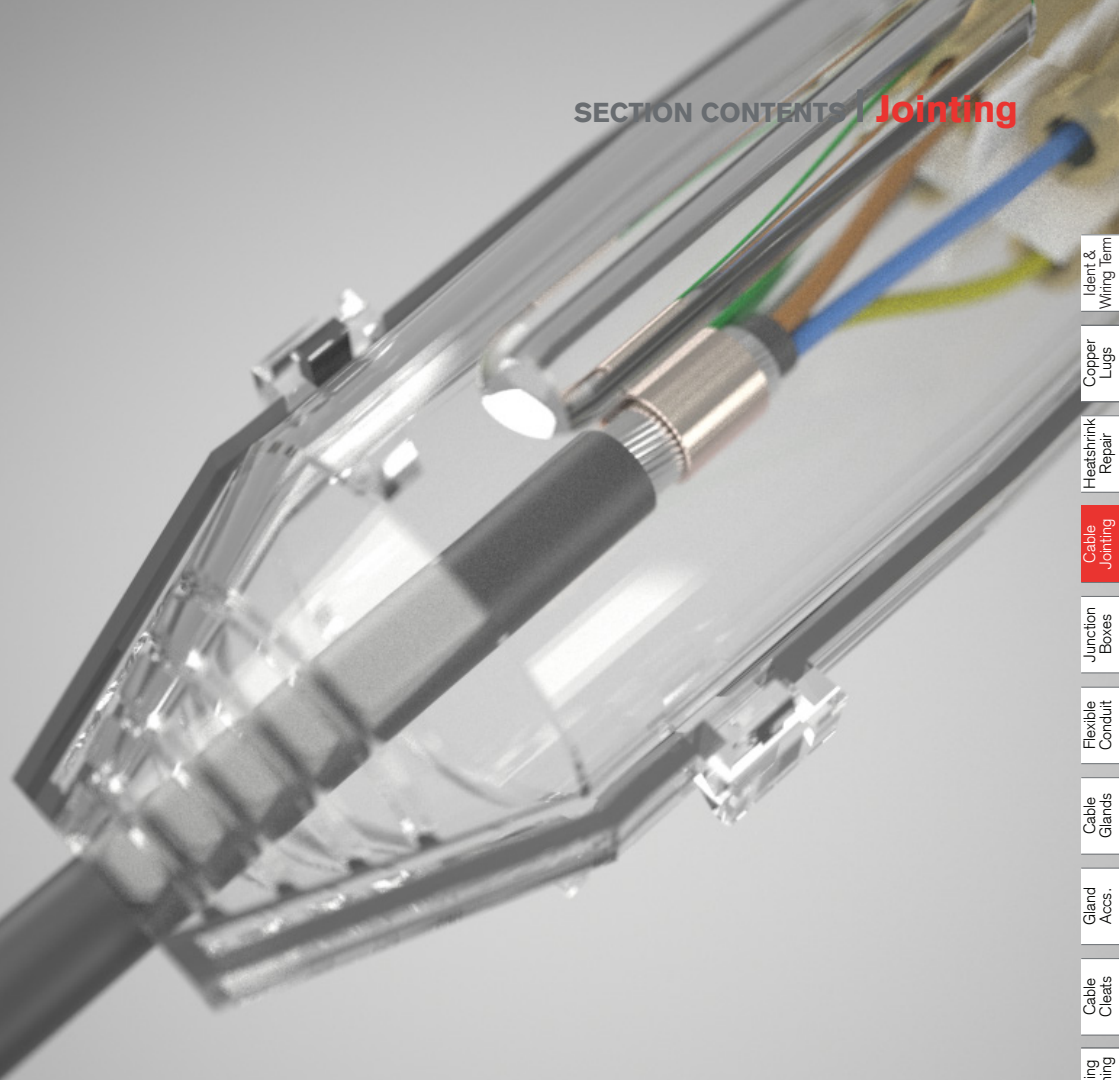
The jointing of cables is a necessity that inevitably occurs in all areas of the electrical industry. The paramount factors are that this is done safely and efficiently, whether this is in LV, MV, or HV installations this remains to be true. Our comprehensive range of LV jointing products ensures that all standards are met and you can be safe in the knowledge you can joint it and forget it.



Resin Joints: Our range of cable jointing solutions and systems encapsulate a wide number of possibilities within the LV and MV applications. Resin Straight and Resin Branch jointing systems are offered for LV applications of up to 1000v, accommodating upto 400mm² cable in straight and 70mm² in branch kits. The snap lock shells and easy pour two-part resin gives a quick, clean and efficient jointing solution.

Duct Sealing Systems: If you are running ducting to carry a configuration of cables or pipes, why not use our FiloSeal+HD or FiloSeal+HD FIRE product? By utilising the hexagonal shaped tubes to build up a honeycomb structure around the components contained in the duct means that a mechanical support is achieved. Then applying the sealant creates a flexible elastomer mass, after curing via humidity alone gives an effective seal and bond. The seal stays soft to the touch in order to re-enter and pass additional cables or pipes into the duct in the future.

Cold Shrink Systems: Cold Shrink systems are the efficient, easy alternative to Heat Shrink. Are you fed up with lugging all that extra equipment around site such as heat guns and gas bottles and seeking the appropriate permits to carry out Heat Shrink work? Then go Cold! Remora have the solution for you whether it be End Caps, Joints or Abandonment kits. The elastomeric properties that exist in Cold Shrink products, means that the tube acts like an elastic band being stretched over the termination or joint, then exercising a forcible inward motion applying a continuous squeezing effect onto the cable.



Ident & Wiring Term

Copper Lugs

Heatshrink Repair

Cable Joining

Junction Boxes

Flexible Conduit

Cable Glands

Gland Accs.

Cable Cleats

Earthing Lightning

MCC Cable

Cable Ties & Acc

Tooling & Cable Prep

Fixing & Security

Cable Joints & Connectors P. 58 | 61



Lever Terminals & Cable Socks P. 62 | 63



In-line IP68 Connectors P. 64 | 65



Cable Duct Sealing Systems P. 66 | 67



Cold Shrink Systems P. 68 | 69

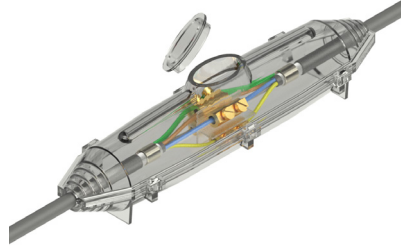


CABLE JOINTING - STRAIGHT

Straight Resin

RCM Straight Joint 600/1000v

The RCM Range of Resin Joints are designed for 600/1000v cables with stranded copper or solid aluminium conductors up to 400mm² PVC, XLPE or EPR insulated, PVC sheathed single wire armoured, aluminium strip armoured or unarmoured cables. The joints have been specifically designed to offer the user quick, clean & efficient jointing featuring snap lock shells & easy-pour two-part resin.



RCM Straight Joints

The RCM range of Resin Joints are designed to be used with 600/1000v cables with stranded copper or solid aluminium conductors up to 400mm². Steel Wire Armoured, Aluminium Strip Armoured or Unarmoured Cables with either PVC, XLPE or EPR insulated sleeving. The joints have been designed to offer the user quick, clean and efficient jointing featuring snap-lock shells and easy-pour two-part resin.

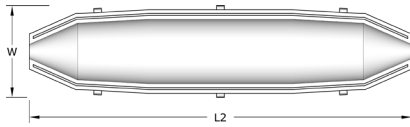
- Designed for UK armoured cables to allow plenty of room to work

Material: Hydrolysis resistant polyurethane resin

Voltage: 600/1000 volts (3.3kV with upgrade)

Temperature Range: -10°C to 120°C

Standards: DIN EN 50393:2006-11 (VDE 0278-393)



+ Connectors	Max Cable Size					Resin
Code	2, 3, 4 core (mm ²)	Cable Entry	Length (L2)	Width (W)	Shell Style	Content (ml)
RCM0+C	1.5 - 6.0	5 - 20	200.0	35.0	Injection Mould - Snaplock	200
RCM1+C	10.0 - 16.0	8 - 30	250.0	45.0	Injection Mould - Snaplock	360
RCM2+C	16.0 - 25.0	10 - 34	320.0	60.0	Injection Mould - Snaplock	800
RCM2.5+C	35.0 - 70.0	26 - 53	355.0	72.0	Injection Mould - Snaplock	1160
RCM3+C	70.0 - 95.0	30 - 48	450.0	75.0	Injection Mould - Snaplock	1360
RCM4+C	95.0 - 120.0	37 - 67	547.0	108.0	Injection Mould - Snaplock	4070
RCS5+C	150.0 - 185.0	48 - 88	700.0	140.0	Vacuum Formed	7560
RCS6+C	240.0 - 300.0	48 - 88	800.0	160.0	Vacuum Formed	10080
RCS7+C	400.0	70 - 105	1345.0	155.0	Vacuum Formed	17600

Quick Selection Chart - Armoured Cable

No. of Cores	Cable Size mm ²																	
	1.5	2.5	4	6	10	16	25	35	50	70	95	120	150	185	240	300	400	
2	RCM0					RCM1		RCM2		RCM3			RCM4				RCS6	RCS7
3	RCM0				RCM1		RCM2	RCM2.5				RCM4		RCS5	RCS6			RCS7
4	RCM0			RCM1		RCM2	RCM2.5				RCM4	RCS5		RCS6				RCS7
5	RCM0	RCM1			RCM2		RCM3		RCM4		RCS5		RCS6	RCS7				
6	RCM1																	
7	RCM1																	
8	RCM1																	
10	RCM2																	
12	RCM3																	
16	RCM3																	

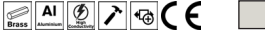
All dimensions in mm except where stated

Straight Mechanical Connectors

Straight Mechanical Connectors for use with RCM Resin Joints.

- Suitable for connecting conductors in straight joints
- Suitable for solid strand conductors
- Brass for sizes 1.5-120mm².

Material: Nickel Plated Brass



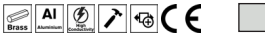
Code	Description	Cable Range mm ²	Pack QTY
RMC1/0	Brass tunnel connector	1.5 - 6.0	4
RMC1/1	Brass tunnel connector	6.0 - 16.0	4
RMC1/2	Brass tunnel connector	10.0 - 35.0	4
RMC1/3	Brass tunnel connector	16.0 - 70.0	4
RMC1/5	Brass tunnel connector	50.0 - 95.0	4



Straight Mechanical Connectors for use with RCM Resin Joints.

- Jointing of stranded aluminium or copper cores in applications up to 11kV
- Shear bolts to ensure a consistent & reliable connection
- Supplied with Brass gauze to improve electrical stability when joining copper cables
- Aluminium shear-head bolts for sizes 25-300mm²

Material: Aluminium



Code	Length	Width	Height	Cable Range mm ²
UM95	86.0	26.0	24.5	25.0 - 95.0
UM185	108.0	35.0	33.0	35.0 - 185.0
UM300	120.0	41.0	40.0	70.0 - 300.0



Two-Part Jointing Resin

Easy-pour Polyurethane resin is specially designed for cable joints up to 1kV. It has good anti corrosion properties and shows excellent adhesion to metals, ceramics, and many different plastics.

Material: Hydrolysis resistant polyurethane resin

Voltage: 1kV (1000v)

Standards: IEC 60455-3-8:2013



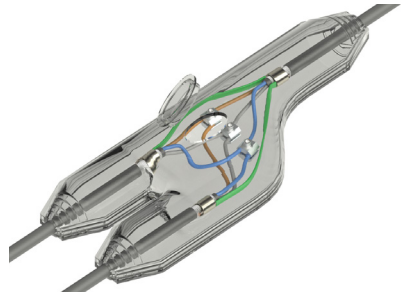
Code	Content ml	Colour
PR360	360	Black
PR800	800	Black
PR1800	1800	Black



Branch Resin

RCB Branch Joint 600/1000v

The RCB Range of Resin Joints are designed for 600/1000v cables with stranded copper or solid aluminium conductors up to 70mm² PVC, XLPE or EPR insulated, PVC sheathed single wire armoured, aluminium strip armoured or unarmoured. The joints have been specifically designed to join three equal or smaller sized cables. They offer quick, clean & efficient jointing with snap lock shells & easy-pour two-part resin.



RCB Branch Joints

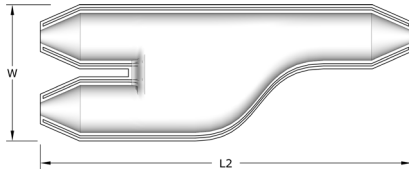
The RCB range of Resin Joints are designed to be used with 600/1000v cables with stranded copper or solid aluminium conductors up to 70mm². Steel Wire Armoured, Aluminium Strip Armoured or Unarmoured Cables with either PVC, XLPE or EPR insulated sleeving. The joints have been designed to offer the user quick, clean and efficient jointing featuring snap-lock shells and easy-pour two-part resin.

- Designed for UK armoured cables to allow plenty of room to work

Material: Hydrolysis resistant polyurethane resin

Voltage: 1kV (1000v)

Standards: DIN EN 50393:2006-11 (VDE 0278-393:2006-11)



+ Connectors	Max Cable Size						Resin
Code	2, 3, 4 core (mm ²)	Cable Entry	Length (L2)	Width (W)	Shell Style	Content (ml)	
RCB6+C	1.5 - 6.0	12.0 - 24.0	220.0	76.0	Injection Mould - Snaplock	470	
RCB16+C	6.0 - 16.0	9.0 - 25.0	335.0	120.0	Injection Mould - Snaplock	1270	
RCB35+C	25.0 - 35.0	8.0 - 30.0	420.0	135.0	Injection Mould - Snaplock	2000	
RCB70+C	50.0 - 70.0	15.0 - 40.0	485.0	120.0	Vacuum Formed	3600	

Quick Selection Chart - Armoured Cable

No. of Cores	Cable Size mm ²													
	1.5	2.5	4	6	10	16	25	35	50	70	95	120	150	185
1	RCB6			RCB16					RCB35		RCB70			
2	RCB6			RCB16			RCB35			RCB70				
3	RCB6			RCB16			RCB35		RCB70					
4	RCB6			RCB16			RCB35		RCB70					
5	RCB16					RCB35		RCB70						

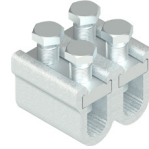
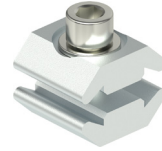
Branch Mechanical Connectors

Branch Mechanical Connectors for use with RCB Resin Joints.
For use with cables up to 95mm².

Material: Aluminium Alloy



Code	Length	Width	Height	Cable Range mm ²
P1	23.0	20.0	25.0	< 35.0
WM1	40.0	41.0	34.0	16.0 - 95.0



Two-Part Jointing Resin

Easy-pour Polyurethane resin is specially designed for cable joints up to 1kV. It has good anti corrosion properties and shows excellent adhesion to metals, ceramics, and many different plastics.

Material: Hydrolysis resistant polyurethane resin

Voltage: 1kV (1000v)

Standards: IEC 60455-3-8:2013



Code	Content ml	Colour
PR360	360	Black
PR800	800	Black
PR1800	1800	Black

